



# **Doença Metastática HER2 *positiva***

***San Antonio 2010***

*Ricardo Marques*

*Centro de Oncologia Hospital Sírio-Libanês*

*São Paulo - SP*

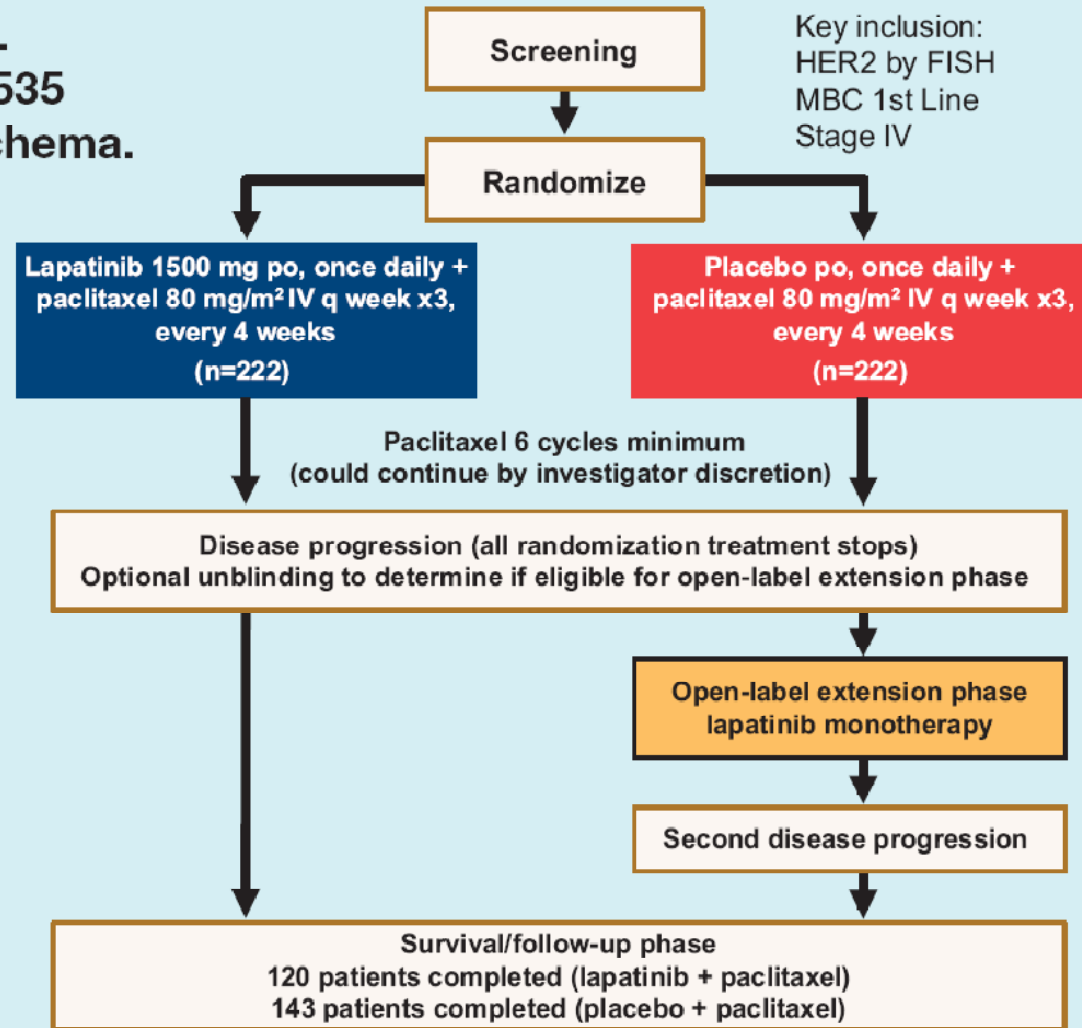


Overall Survival Benefit Observed with  
**Lapatinib** (L) Plus **Paclitaxel** (P) as *First-Line*  
Therapy in Patients with HER2-  
Overexpressing  
Metastatic Breast Cancer (MBC).

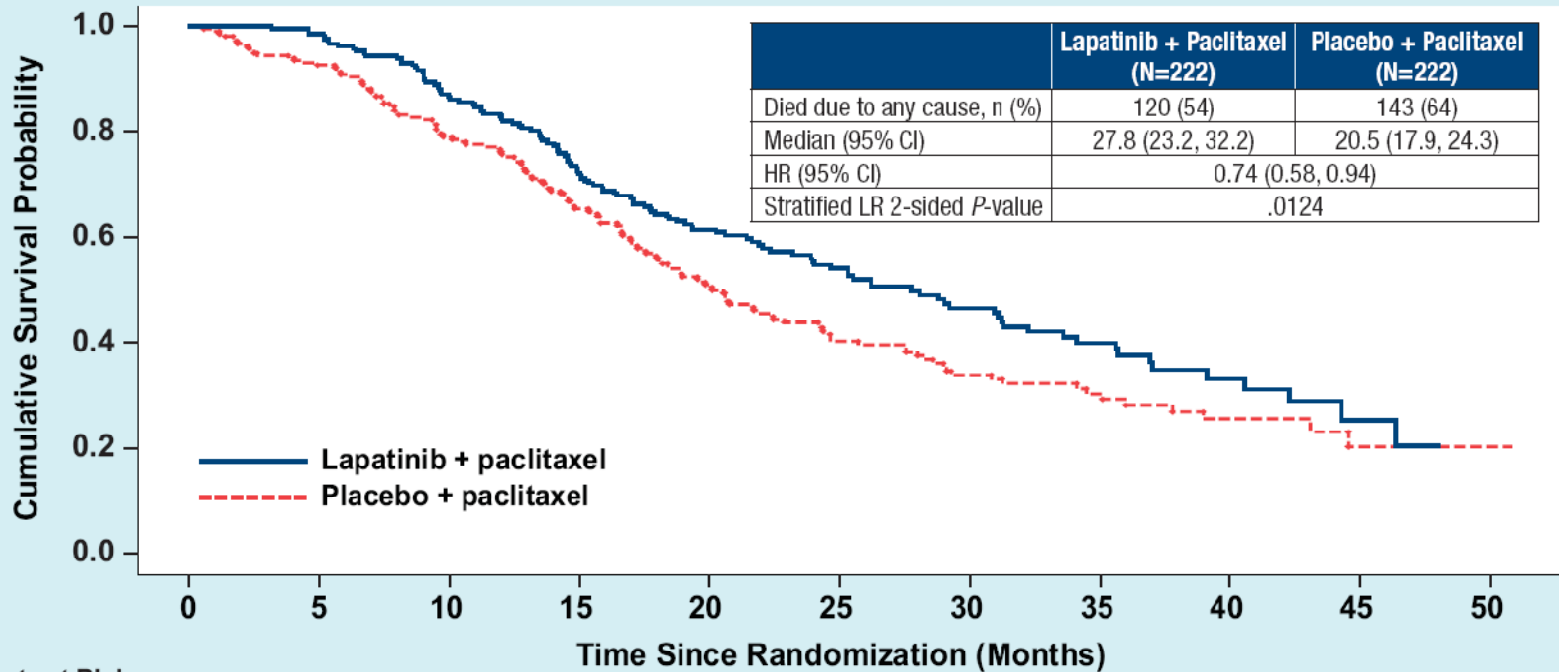
*Guan Z-zet al.*



**Figure 1.**  
**EGF104535**  
**study schema.**



# Sobrevida Global



		Patients at Risk										
		0	5	10	15	20	25	30	35	40	45	50
Lapatinib + Paclitaxel	222	216	189	153	113	79	54	38	18	7		
Placebo + Paclitaxel	222	204	173	139	97	63	45	31	16	6	1	



Final Overall Survival Analysis  
of the TBP Phase III Study (GBG 26/BIG 3-05):  
**Capecitabine** vs. **Capecitabine** + **Trastuzumab**  
in Patients with HER2-Positive Metastatic  
Breast Cancer Progressing during  
Trastuzumab Treatment.

*von Minckwitz G et al.*



Sobrevida Global: média 20,7 meses seguimento

---

	Capecitabina	Capecitabina e Trastuzumab	HR	<i>p</i>
Desfecho				
SG	20,6 meses	24,9 meses	0,94	0,73



## Terapia Anti-HER2 na progressão (3ª linha)

Desfecho	Sim (88)	Não (52)	HR	<i>p</i>
SG	18,8 meses	13,3 meses	0,63	0,02



Safety and Efficacy of Neratinib (HKI-272)  
Plus Vinorelbine in the Treatment of  
Patients with ErbB2+ Metastatic Breast  
Cancer Pretreated with Anti-HER2 Therapy.

*Staroslawska Eet al.*



## Resposta Clínica Objetiva

---

	<b>Sem Lapat.</b>	<b>Com Lapat.</b>
Desfecho	(n=43)	(n=12)
RC	51%	42%
DE	40%	33
DP	9	25



## Toxicidade $\geq 3$

---

Toxicidade	%
------------	---

Neutropenia	36
-------------	----

Diarréia	25,8
----------	------

Leucopenia	11,2
------------	------



# Efficacy and Safety of Neratinib (HKI-272) in Combination with Paclitaxel in Her2+ Metastatic Breast Cancer

*Chow Let al.*



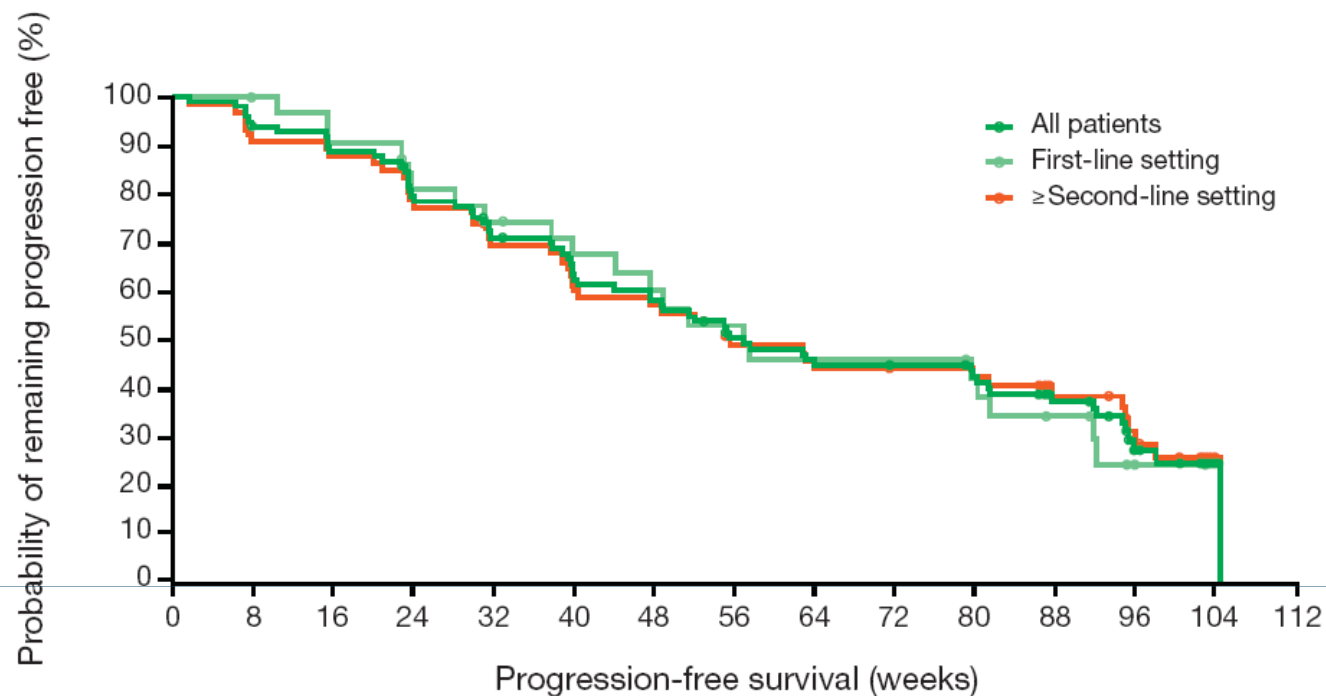
## Resposta Clínica Objetiva

---

	1ª linha	<i>Anti-HER prévio*</i>
Desfecho	<i>(n=33)</i>	<i>(n=38)</i>
RC	<b>70%</b> <i>(51,3-84,4)</i>	<b>68%</b> <i>(51,3-82,5)</i>

\*14/10 previamente tratados com lapatinib  
*RC 71% (41,9-91,6)*

# Sobrevida Livre de progressão (*semanas*)



	Number of patients														
All patients	99	92	87	77	67	59	54	45	41	39	36	26	14	2	0
First-line setting	33	32	29	25	22	19	17	15	13	13	11	8	2	0	0
≥Second-line setting	66	60	58	52	45	40	37	30	28	26	25	18	12	2	0

Efficacy subsets	n	Median PFS	95 % CI
All patients	99	57.0 weeks	47.7–81.6
First-line setting	33	57.0 weeks	44.1–91.9
≥Second-line setting	66	55.6 weeks	40.0–94.9

PFS, progression-free survival; CI, confidence interval.

<sup>a</sup>Based on investigator assessment.



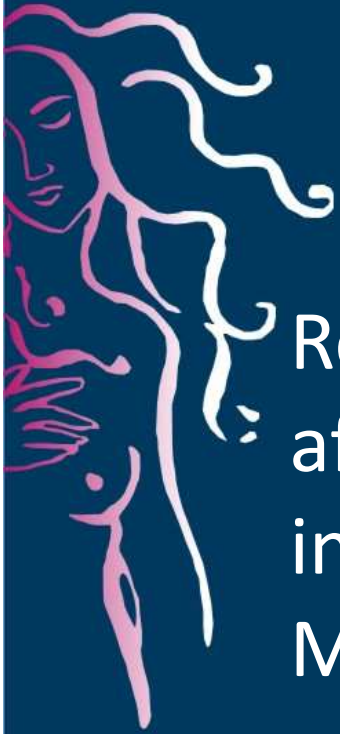
## Toxicidade $\geq 3$

---

Toxicidade	%
------------	---

Neutropenia	22
-------------	----

Diarréia	28
----------	----

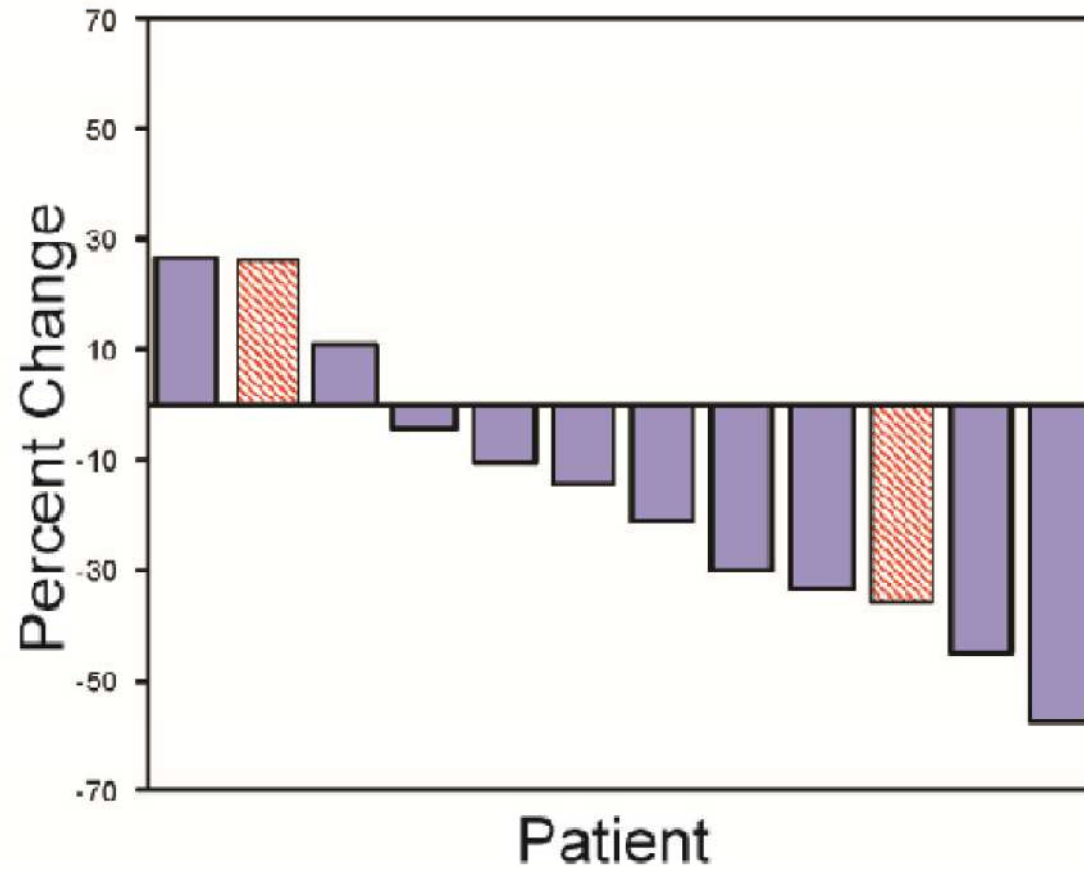


# Responses to Subsequent Anti-HER2 Therapy after Treatment with Trastuzumab-DM1 in Women with HER2-Positive Metastatic Breast Cancer

*Olson EM al.*



## Maximum Decrease in Target Lesion Diameter



n=20